

TOWN OF AMENIA  
Dutchess County, New York State

# RECREATION PLAN 2006

July 2006



# TABLE OF CONTENTS

TABLE OF CONTENTS .....	i
ACKNOWLEDGEMENTS .....	iii
EXECUTIVE SUMMARY .....	v
1. INTRODUCTION .....	1
2. GOALS .....	2
3. COMMUNITY PROFILE .....	4
Population .....	4
Age Groups .....	4
Household Size and Type .....	5
Housing Costs & Characteristics .....	5
Income and Employment .....	6
Ethnic Composition .....	6
Transportation .....	6
Future Population Trends .....	6
4. SUPPLY AND DEMAND ANALYSIS .....	8
List of Recreational Resources: .....	8
Overview of Town Recreation Facilities .....	9
Level of Service Standards (LOS) .....	13
Demand Analysis .....	15
Community survey .....	16
Future Planning .....	18
5. ACTION PLAN .....	19
6. MAPS	
1. Town Recreation Plan 2006	
2. Amenia Hamlet Concept Plan	
3. Wassaic Hamlet Concept Plan	
4. Beekman Park Plan	

- 5.     Wassaic Park Plan
- 6.     Population Distribution Map
  
- 7.     APPENDICES
  - A.     Community Survey
  - B.     LOS Methodology & Calculations
  - C.     Recreation Organizational Flowchart

## ACKNOWLEDGEMENTS

Town supervisor: Janet Reagon  
(Bonnie Hundt – Past Supervisor)

Town Board: Vicki Doyle Roger Russell  
Victoria Perotti  
Roger Russell  
Wayne Euvrard  
William Carroll (previous board member)  
Jim Devine (previous board member)

Recreation Plan 2006 Working Group:

Peter Clair  
William Carroll  
Bill Flood  
Linda Gregory  
Ken Pomeisl  
John Ryan

Amenia Recreation Commission:

Peter Clair; Commissioner,  
Ken Pomeisl; Director, Recreation Department

Members:

Tom Werner  
Pete Clair Chairman  
Linda Gregory Secretary  
Frankie O'Connell  
Orpha Thomas  
Charlene Pollinger  
Mike Murnane

Planning Consultants:

Guntlow & Associates, Inc.

Additional Thanks to:

Ken Hoadley, Ann Linden, Town Historians  
Betsy Mark, Dutchess Co. Real Property



## EXECUTIVE SUMMARY

In 2005, the Town of Amenia initiated a planning process to prepare a *Recreation Plan* to guide the development of recreational facilities and parks for the enjoyment of the Town's residents and potential visitors. Working with a planning consultant, the Town and the Recreation Commission inventoried current facilities, conducted a community survey, and created a vision and set of goals for the establishment of a coordinated Recreation and Parks System. A concept sketch for the development of Beekman Park was prepared, as well as a concept plan for the entire Town. Finally, an Action Plan was developed to set out a detailed list of actions that should be carried out to achieve the desired goals. The Town adopted the Plan in July 2006.

# INTRODUCTION

In 2006, The Town of Amenia developed the *Recreation Plan 2006* to provide for an orderly system of recreational facilities that would accommodate the needs of all of its residents. Public opinion was solicited by way of a community survey which was mailed to all of the Town's residents. As a result of the survey, planning meetings conducted by the Town Board, Recreation Commission and the Recreation Planning Group, the *Recreation Plan 2006* was completed in the spring of 2006. After a final presentation to the public, the plan was adopted in July 2006.

The *Recreation Plan 2006* includes major goals for the future, a review of Town demographics, an inventory of current recreational resources, a supply and demand analysis, as well as a detailed action plan to realize the Town's goals.

This plan document is divided into the following sections:

Section 1 – Introduction

Section 2 – Goals - states the major goals of the *Recreation Plan 2006*

Section 3 – Community Profile & Population Trends - presents a brief overview of the character and demographics of the Town

Section 4 – Supply and Demand Analysis - presents a detailed analysis comparing the current facilities to current and future demand based on total population, population characteristics and future growth

Section 5 – Action Plan - details the specific actions that must be taken to realize the Town's goals for recreation

Section 6 – Maps - Concept and other Maps

Section 7 - Appendices – Includes the Community Survey, LOS calculations and Recreational organizational flowchart.

## GOALS

This section of the plan identifies the major goals of the *Recreation Plan 2006* which establishes a Town-wide Parks and Recreation system. The implementation of the Plan will ensure the provision of recreational amenities, facilities, and services for all of the residents of the Town.

### GOAL 1

Maintain, improve and enhance existing recreational parks and facilities.

### GOAL 2

Provide a variety of Programs and Services in the Parks and Recreation System. The recreational programs should provide cultural, passive and active recreational activities and services for children, youth, adults and Senior Citizens.

### GOAL 3

Improve and enhance public access to all recreational lands and facilities through a system of trails and transportation routes including public roads, and bike/hike trails. Capitalize on the great success of Harlem Valley Rail Trail. Maximize its potential to provide a non-vehicular transportation corridor that can link existing and future recreation facilities. Tap potential for out-of-town trail users to utilize existing and new recreation facilities.

### GOAL 4

Promote the acquisition and availability of passive recreational areas in order to conserve open space and provide alternative venues for passive recreational activities.



### GOAL 5

Provide efficient administration of the Parks and Recreation system. The foundation for this goal is to be based on the needs of the residents and users of the recreational amenities. The stakeholders and users will be requested to clearly state their respective responsibilities and requirements. The Town will then establish a decision-making process on issues relating to recreation events, programming and allocation of funds.

### GOAL 6

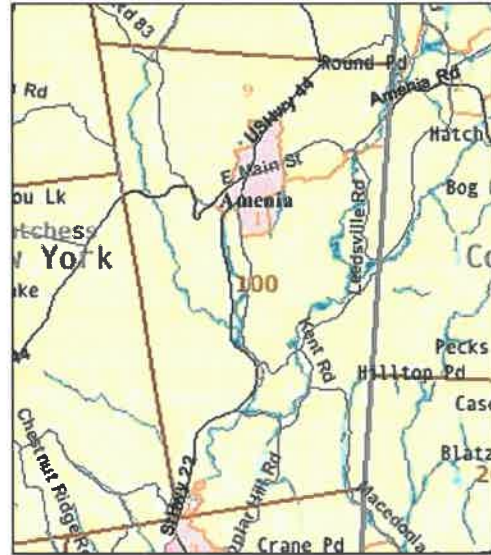
Provide new recreational parks and facilities to accommodate all age groups. Identify and secure funding sources for the acquisition of new recreational lands, and improvement of current and future parkland and facilities for all of Amenia's citizens.

### GOAL 7

Work with other levels of government and governmental agencies such as the Department of Environmental Conservation to improve access to recreational lands and open space, and improve parkland and recreational amenities when possible.

## COMMUNITY PROFILE

For purposes of this report the 2000 US Census is used. The 2000 census provides the most comprehensive and recent information for the town. The US Census breaks out geographic areas of the Town by Tract, Block Groups and individual Blocks. The Town of Amenia is known as Census Tract 100. It is divided into four Block Groups: Block Group 1 which represents the Hamlet of Amenia, Block Group 9 which is the entire portion of town north of Rts 44 and 343 except those areas within Block group 1, Block Group 3 which is all areas south of Rt. 44 and 343 except for the Amenia hamlet and Block Group 2, and Block Group 2, which represents a small quadrant in the town's southwest immediately north of Dover Plains.



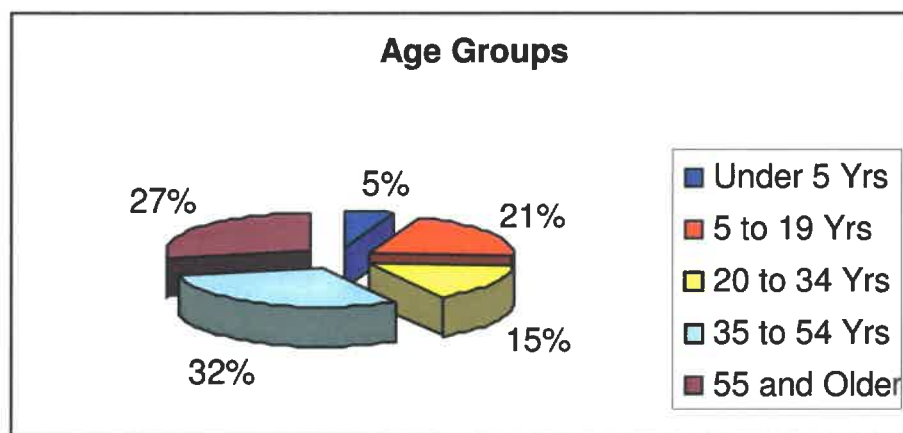
Source: Census 2000

### POPULATION

The total existing population for the Town of Amenia is 4,048 people. Block Group 3 contained the highest total population at 2,047 (51% of the total), while Block Groups 1, 9, and 2 followed with 1,071 (26%), 544 (13%), and 386 (10%), respectively. The population is clustered around the hamlets. (See the Population Distribution Map in the Map Section.)

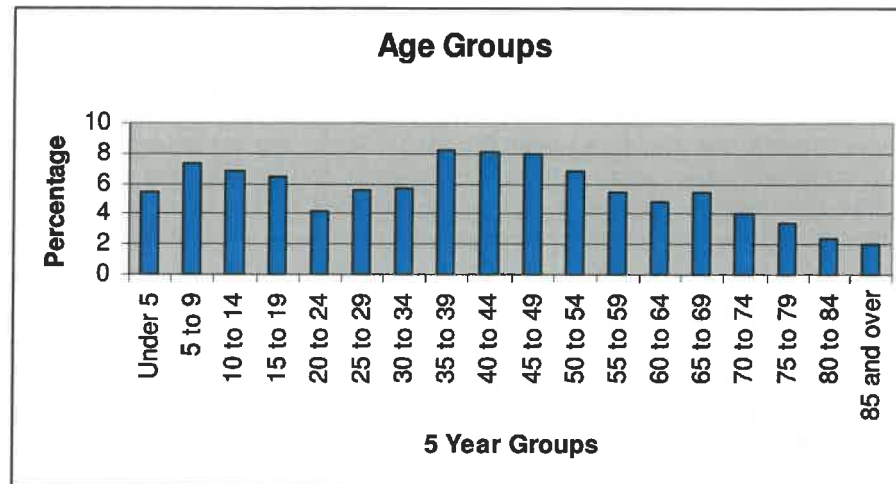
### AGE GROUPS

Approximately 20% of the total population consists of school age (K thru 12) children while 15% of the population falls within the 20 through 34 age group. Almost one third of the town (31.1 %) is between the ages 35 and 54. People 55 years and up make up 27.5 % of the population.



Source: Census 2000

If one were to look at the detailed breakdown of age groups they would notice that there is a decline in population in the older age groups .



Source: Census 2000

The general population of Amenia is split fairly evenly between the sexes with 48.9% males and 51.9% females. This even split is reflected across all Census Block Groups except Block Group 1 where females make up 52% and males 48%.

The median age for the town is 40.2 years old. The median ages for Block Groups 3 and 9 closely resemble the town-wide median age at 39.5 and 40.5, respectively. The two remaining block groups, however, show significant variations from the town-wide median age. For example, Block Group 1 shows a slightly lower median age of 37.8 while Block Group 2 shows a significant deviation with a median age of 58 years old.

## HOUSEHOLD SIZE AND TYPE

The total number of households in 2000 was 1,625. Of these 1625 households, 1118 are owner occupied while the remaining 507 are renter occupied. The average household sizes by these two types are of 2.48 and 2.40, respectively. The overall average household size is 2.46 while the average family size is 2.97.

The total households and Block Group distribution closely matched the town-wide distribution of the general population.

## HOUSING COSTS & CHARACTERISTICS

There are 1,814 housing units in the Town, of which 1,625 are occupied. The majority of housing units in the Town (65%) were built prior to 1969. Fuel oil or kerosene is the heating fuel for 82.9% of the units. Of the 1,625 occupied housing units, 1,118 or 68.8% are owner-occupied. The median housing value for 730 specified owner occupied units is

\$127,700 per the 2000 census. This compares favorably to the New York State median of \$119,600.

## INCOME AND EMPLOYMENT

Of the population 16 years and older (3,252 persons) 1,999 or 61.5% are in the labor force. Of these, all but 43 individuals were employed. The largest industry in the Town is educational, health and social services (35.3%). There are no other major industries, with construction, retail trade, and manufacturing each comprising less than 10% of the total. The median per capital income is \$22,095 compared to the NYS median of \$23,389; the median household income is \$39,231 compared to the New York State median of \$43,393.

## ETHNIC COMPOSITION

98.2% of Amenia's population identified themselves as belonging to one race in the 2000 Census. The largest single racial group in Amenia is White at 93.4%. African Americans represent 2.9% of the population with American Indian and Alaska Natives representing the next largest minority group at 0.6%. Asian, Asian Indian and Chinese make up 0.5%, 0.3% and 0.1% of the total population, respectively. The remaining 1.8% identified themselves as belonging to two or more races.

## TRANSPORTATION

Public transportation in the Town of Amenia is limited to commuter rail transport (MTA), and Dutchess County bus service, "The Loop". A private taxi company is also available. Most workers (79.1%) drove alone to work, while 13.2% carpooled.

## FUTURE POPULATION TRENDS

Population forecasting for the Town of Amenia is found in the *The Dutchess County Forecasting Project*, written jointly by Dutchess County Department of Planning and Development and the Poughkeepsie-Dutchess County Transportation Council in the fall of 1996. This report projects future growth of the county as well as the various towns and cities within it. Amenia was highlighted in the report as an exception, in that it experienced a major population decline between 1990 and 1995 due to *"entirely (to) a decrease in group quarters population in the Wassaic Development Center/Taconic DDSO."* During this time period the population of Amenia decreased from 5,195 to 4,677.

Populations were projected out 25 years for individual towns using the county-wide "moderate growth scenario" and adjusting the projections for individual localities with special circumstances. Their projection for Amenia for year 2000 was set optimistically at 4,730, 14% higher than the 4,028 year 2000 census figure. Again, the major factor was the continued decrease in the group quarters population at the Wassaic Development Center (WDS). Subsequent projections for Amenia are 4,875; 4,963; 5,578; 6,108 for years 2005, 2010, 2015 and 2020, respectively.

One statement in the report is certainly true: *"over the long term, residential growth is forecast for Amenia"*, however, the words that follow; *" , reflecting the redevelopment of the Wassaic Development Center/Taconic DDSO."* are not the case. Indeed, the WDC/Taconic DDSO is a huge wild card in the future growth projections of Amenia. The sewage treatment facility for the site alone can accommodate 5,000. The fact is that the land remains in the hands of the state and before anything can happen at the site the existing buildings and the environmental hazards on-site, i.e. asbestos, will need to be addressed.

The extension of the Harlem Valley Line arm of Metro North into Amenia five years ago has precipitated unprecedented development pressures on the town. There are currently three to five major developments in the planning stages. The Wassaic terminus of the MTA Harlem Valley Line puts commuters in manageable range to not only Manhattan, but also major employment centers in Westchester County and Connecticut. An additional stop, the "Ten Mile" stop, adjacent to the WDC/Taconic DDSO makes the land in the immediate surroundings incredibly ripe for residential development. Together with the mass transit incentive, the decrease in affordable housing to the south, and NYS route 22's location a stone's throw from I-695, Amenia is potentially poised for intense residential growth.

## SUPPLY AND DEMAND ANALYSIS

This chapter presents an inventory of existing resources and considers the current and future recreational needs of the Town. The inventory includes not only existing town recreation resources, but also natural resources within the town that have potential as future recreational facilities and resources.

### LIST OF RECREATIONAL RESOURCES:

#### TOWN RECREATION FACILITIES:

Beekman Park  
Wassaic Park  
Amenia Elementary School Basketball / Tennis Courts

#### LOCAL NON-TOWN RECREATION FACILITIES

Silo Ridge Golf Course  
Amenia Fish and Game  
Vinciarello Park  
Webutuck High School Recreational Facilities

#### REGIONAL RECREATIONAL FACILITIES

DEC's Wassaic Multiple Use Area  
Harlem Valley Rail Trail  
Taconic State Park

#### RECREATION ORGANIZATIONS:

Amenia Lions Club  
Amenia Fish and Game Club  
Chess Club

#### RECREATIONAL PROGRAMS:

Ballroom Dancing	Senior Clubs
TriArts at the Sharon Playhouse	Senior Trips
Youth Music and Dance Program	Senior Swim Program
Youth Baseball	Music & Dance Program
Youth Soccer	Tennis Program
Office of the Aging (Nutritional Program)	Youth Summer Camp

## OVERVIEW OF TOWN RECREATION FACILITIES

Beekman Park and the Borden Parks are currently the two primary recreational facilities provided by the Town of Amenia.

### BEEKMAN PARK

Prior to 1955, the dominant natural feature of the Beekman Park site was Lake Amenia. A dam located at the intersections of Lake Amenia and West Lake Amenia Roads formed the lake. The current remains of the dam are estimated to have been built in 1920. Originally, the dam was used to power an adjoining sawmill. The resulting body of water provided the added civic benefits of swimming and fishing as well as the aesthetic ambience that a water body provides. Real estate interests developed the area surrounding the "lake" in the 1920's into a community called "Beekman's Development", complete with lakeside cottages and rustic pavilions, docks and railings. A brochure was developed which undoubtedly was meant to target New Yorkers, who had access to the area via train, looking for a quiet country retreat. Some of these structures exist to this day.

Two events occurred in the 1950's, which not only ended Lake Amenia itself, but also the tourist character of the surrounding structures. One was 1955's Hurricane Diane, which swept through the area dumping large quantities of rain. Local lore has it that the gates that were meant to be manually opened to allow for larger flows during storms were unable to be opened when the keeper accidentally dropped the key in the rushing water. The resulting overflow overtopped the dam and eroded it away, causing the lakebed to drain to its current state. The lakebed is now New York State Wetlands.



Beekman Park Play Equipment

The second event was the post WW II advent of automobiles and resulting development of the interstate highway system. The mobility that was now available to New York City area residents led to the Catskills as new summer vacation spot. People no longer had to rely on railroads, such as the one that previously brought the city folk to Amenia via the Harlem Valley line.

The two streams that traverse the Park and flow south converge just north of the remains of the old dam which fed the lake are now confined to their original channels. The northeastern portion of Beekman Park sits higher in elevation in relation to the old lakebed and its elevation is the reason it has been developed for recreational purposes. This area that was developed consists of one baseball field, two softball fields, a small tot lot and associated parking. The centerpiece of the park is the baseball field, a.k.a. "Doc Bartlett Field", which has been improved over the years to include a concrete block structure for concessions, storage and bathrooms, lighting for night games, and bleachers.



The two softball fields are situated immediately west of the baseball field. There is a 60 car parking area with access off Rt. 44 just north of the fields. A dirt, one-lane service road runs west of the fields along the edge of the low wet areas and connects the concessions building to the main, northern parking area. The Lions Club currently has plans to build a pavilion adjacent to the concessions building.



Doc Bartlett Field

## **WASSAIC PARK**

Wassaic Park is a town-owned parcel located in the Wassaic hamlet. It is bounded on the east by the Metro North railroad tracks, to the north by the former Borden factory building, to the west by the Wassaic Creek and the south by a vacant parcel owned by NYSDEC. Access is via a narrow bridge that was originally built for rail car access to the Borden factory. The parcel has a small baseball field and some outdated playground equipment. There is a small, paved turnaround immediately adjacent to the one-lane bridge. The C.A.C is working with the Trout Unlimited to extend trails onto land owned by DEC for passive recreational activities and possible expansion onto the Wassaic Multiple Use Area.

The park is located in a very secluded area. As such, vehicular access is difficult since one has to traverse the loading dock area of the Pawling factory and there is no directional signage provided. Additionally, the park is made even more difficult to find due to its being shielded visually by vegetation along the creek as one approaches from the north along the street. There are currently no dedicated pedestrian passageways to the park from the surrounding neighborhood, although there is a lane parallel to the railroad tracks which could be paved to provide access.

## **BORDEN PARK**

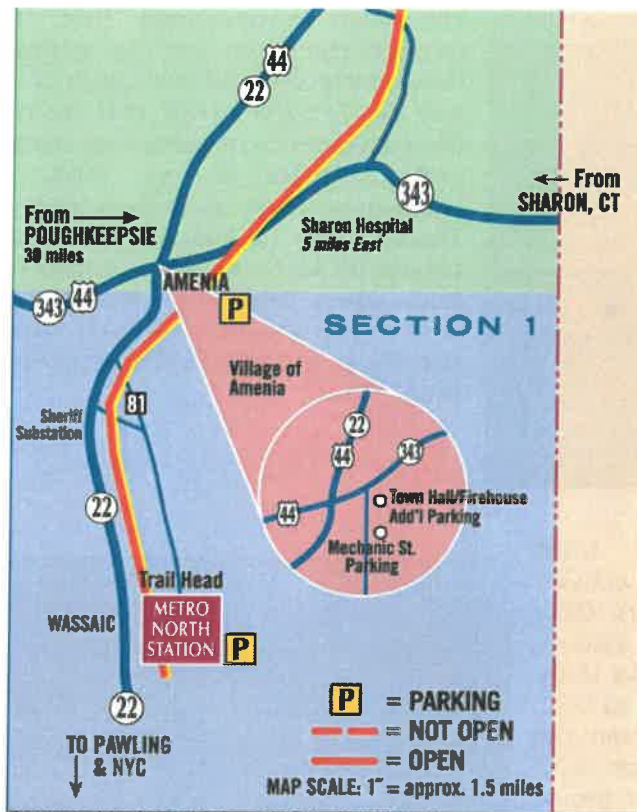
Borden Park is a one quarter acre parcel lying to the north side of the former Borden Factory. Through the office of State Senator Vincent Leibell, a NYS OPRHP grant for \$10,000 has been obtained for historical signage, improving the park appearance and parking. It is strategically located near Wassaic Park in terms of future linkage.

## **DEC MULTIPLE USE AREA**

The NYS Department of Conservation (DEC) owns the "Multiple Use Area" just southwest of the hamlet of Wassaic. The largest portion is a 421-acre piece, which abuts the west side of NYS Rt. 22. This area is very steep and heavily wooded. The area is used primarily by hunters. Another 67-acre portion lies a bit south on the east side of Rt. 22. This area is flat, open and is bounded by the Wassaic Creek along its easterly edge. Recently, DEC purchased a 9.15 parcel, which abuts the southern boundary of Wassaic Park. This area has potential as a possible area for expansion of Wassaic Park.



## HARLEM VALLEY RAIL TRAIL



Source: Harlem Valley Rail Trail Website

The Harlem Valley Rail Trail is a 40 plus mile, multi-use trail envisioned to run from the Wassaic MTA station to Chatham, NY in Columbia County. The organization is a public/private entity and works to coordinate planning as well as many other aspects of the trail. The actual owner of the old rail bed is the State of New York while Dutchess County maintains the in-county portion of the trail. The Amenia section of the Harlem Valley Rail Trail was constructed in 2005 has been an immediate success. This trail segment begins at the Metropolitan Transportation Authority Harlem Valley Line's northern terminus at Wassaic and runs north for 10.7 miles to the Village of Millerton's Eugene L. Brooks Rail Trail Station. A 32 mile segment is envisioned to run from the Village of Millerton north to Chatham in Columbia County is currently in the planning stages.

## LAND RESOURCES

The Town of Amenia is fortunate to have some of the most beautiful scenery one can expect to find anywhere. The two predominant characteristics in the overall landscape are steep unspoiled, wooded uplands and moderately undulating lowlands. The upland wooded areas are contiguous to the Taconic Ridge which generally runs along the New York – Connecticut border. The forested areas are characteristic of mixed deciduous forests.

These areas have tremendous potential for hiking trails, off-road bicycling trails, hunting due to their wilderness characteristics and opportunities to exploit scenic vistas. While most of the land is in private lands, this report embraces the idea of the whole town as a park and therefore explores recreational opportunities for the public throughout the whole town. The Dutchess County Land Conservancy has been active in obtaining conservation easements throughout the town. The map in Section 6- Maps - shows existing parcels that are protected lands as a result.

## WATER RESOURCES



Wassaic Creek near hamlet of Wassaic

Currently, sport fishing, (namely trout fishing) is the primary recreational activity that occurs along the stream corridors. DEC, in conjunction with Dutchess County Sportsman Federation, routinely stocks these streams with brown trout. According to DEC, the stretch of Ten Mile River between the Amenia hamlet and the confluence with Webutuck Creek has a good supply of brown trout. The population is supplemented with stocked brown trout in this waterway because of relatively good access.

The main watercourses that flow through the town are the southerly flowing Wassaic and Webutuck Creeks and the Ten Mile River that starts at the convergence of these two streams and continues on to form the Housatonic River at Bulls Bridge, CT. There are numerous unnamed tributaries to these watercourses that flow down from the mountainsides and empty into the Creeks. These tributaries are excellent resources for brook trout.



Wassaic Creek near Borden Park



Ten Mile River

DEC owns, manages and maintains the 9 acre Wassaic Creek Public Fishing Area located between Rt. 22 and Old Rt 22 (County Rt. 81). DEC has posted fishing a access point at the pull-off and parking location on the east side of Rt. 22 just north of intersection with County Rt. 81.

Boating is also an activity that can be encouraged on these watercourses. Currently, one can canoe the Webutuck Creek from Troutbeck to South Amenia, the limiting points being the occasional downed tree and the existing dam in South Amenia.

The town's many streams are a tremendous asset and can be exploited to offer more recreational opportunities than do currently exist. The Tenmile River and portions of the Webutuck and Wassaic Creeks provide for excellent canoeing and kayaking. Limitations are downed trees and culverts at road crossings. Potential future portages and public access points are features that could be further explored. Stream corridors also provide the most likely locations for future potential greenways. Greenways can provide routes for hiking, biking, jogging and horseback riding.

Public access is key to the use of greenways. While most land adjacent to streams is in private hands, access and development of trails can be facilitated through the use of easements. One such mechanism is a "Public Fishing Rights" program administered by NYS Dept. of Environmental Conservation. This program provides landowners a payment on a "rate per bank-mile" for fishing rights along a 33 foot wide strip of land along each bank. Additional payments are given if the landowner agrees to allow development of trails and parking areas.

## LEVEL OF SERVICE STANDARDS (LOS)

One of the tools available to predict future growth needs for a town Park and Recreation system is through the use of a "Level of Service" standard. A level of service standard (LOS) is typically expressed in "acre/1000 residents". These standards can be applied to all types of park types and each activity within these parks, however, they are not applied to "passive recreation lands with high environmental, scenic, historic and archaeological values" according to current NYS recreational planning practices. In order to plan for future growth of a Town's park and recreation system, a framework for the overall system needs to be established. First, however, the agency needs to decide which menu items to apply LOS. The tables below identify LOS for general recreational classification, and then identifies recreational facilities that exist in the Town of Amenia within those classifications.

### AMENIA PARK CLASSIFICATIONS

	LOS Applies	LOS Does Not Apply
Mini Park		X
Neighborhood Park	X	
Community Parks	X	
Athletic Complexes	X	
Greenways		X

## ACTIVITY MENU FOR RECREATIONAL CLASSIFICATIONS

ACTIVITY	MINI-PARKS	NEIGHBORHOOD PARKS	COMMUNITY PARKS	ATHLETIC COMPLEXES
Tot Lot		1		1
Family Picnic				
Open Space		1		
Group Picnic				
Outdoor Basketball	1			
Outdoor Tennis	1			
Athletic Fields		1 Baseball		1 Baseball 1 Softball 1 Little League
Walking/Jogging			HVRT	
Indoor Crafts				
Indoor fitness				
Indoor Swimming				
Ice Skating				
Outdoor Swimming				
Meeting Rooms			Firehouse	
Auditorium			Catholic Church	
Concessions				1
Maintenance Yard				
Parking				
Nature Education				

By applying the LOS standards to the Town of Amenia, the following types and sizes of parks are recommended. LOS methodology and calculations are included in the Appendices.

## AMENIA PARK & RECREATION SIZE STANDARDS

### *Park Classification*

Mini Park  
Neighborhood Parks  
Community Parks  
Athletic Complexes

### *Minimum Park Size*

1/2 Acre  
5 Acres  
15 Acres  
8.7 Acres in existence at Beekman Park

## DEMANDS ANALYSIS

The Town of Amenia sponsors numerous recreational and social events throughout the year. Additionally, community and commercial organizations offer various recreational opportunities. Listed below are some of the town, and non-town funded events.

### TOWN FUNDED EVENTS:

EVENT	ATTENDANCE
Easter Egg Hunt	100 Children
Fountain Square Memorial Day Ceremony	NA
Holiday of Lights	NA
Summer Band Concert	NA
Secret Garden Tour	NA
Senior Socialization	30 +/- Regular Members
Senior Picnic	100 Attendees in 2005
Senior Bus Trip	20 +/-
Sweethearts Dance	NA

### NON-TOWN FUNDED EVENTS

EVENT	ATTENDANCE
Youth Golf Lessons at Silo Ridge	NA
Monarchs (Adult Club Team)	20 Members (60 % Amenia – Remainder from Sharon, Dover Plains and Millerton)

### TOWN FUNDED RECREATION PROGRAMS:

EVENT	ATTENDANCE
OFA Friendship Center (Seniors)	40 to 50 Members
Open Court at Webutuck High School	NA
Little League	15 Children
Farm League	136 (about 20 non-resident)
Girls Little League Softball	12-15 Girls (Most or all from Amenia)
Connie Mack Baseball	15-20 Players (50% from Amenia – remainder from Millerton, Dover Plains, Pine Plains)
Webutuck Valley Youth Soccer Association	150 Members (50 from Millerton)
Summer Day Camp	70 Children
Dance Program (age 4-18)	40 (75% Amenia, 25% Millerton)

As the table above shows, town funded recreation programs are predominantly baseball and soccer. The increase in popularity of soccer has necessitated the use of the existing ball fields at Beekman Park to be used for soccer as well.

### COMMUNITY SURVEY

It is essential to solicit the opinion of the residents when planning significant community recreational facilities, in order to ensure that plans accurately reflect the desires and opinions of the public. To this end the Town conducted a survey to obtain public input. In early summer 2005 the Recreation Commission mailed out a community survey form to all households in town, about 1,600. The Town received 175 completed surveys which represents a 10.9% response rate. The consultant tallied and compiled the information submitted by the residents.

The survey consisted of three questions and a request for write-in suggestions or comments. A summary of the responses is presented below. The form, summary, and complete list of write-in statements are included in the appendices.

- 1) **FACILITIES & EVENTS** – Which of the following recreation facilities and events have you used or participated in the past year?

The Harlem Valley Rail Trail was used by 135 respondents in the past year. The next most popular facility was the Amenia Library, (used by 95 respondents) with the Silo Ridge Golf Course ranking third with 52 respondents.

The Amenia Carnival was attended by 88 of the respondents, while 72 attended the Holiday or Lights. Other favorite events were the Schoolhouse Picnic (42) and the Fountain Square Memorial Day (40).

2) **WISHES AND DESIRES** – Would you be willing to participate in any of the following programs?

Respondents replied favorably to many of the options in the given Intergenerational list of programs. Open Swimming was the favorite, chosen by 100 respondents, followed by Fitness Program (75), Open Walking/Jogging (75), ice Skating (68) and Horseback Riding (57).

For the Adult list, a Fitness Center/Program was the favorite, checked by 81 respondents, followed by Yoga/Pilates (62) and Water Aerobics (51).

Favorite programs in the Youth list, included a Teen Center, chosen by 63 respondents, followed by a Summer Day Camp (41), Swim Lessons (40) and Open Swimming (39).

3) **GENERAL INFORMATION** – This was a five part question asking for information on current household participation, reasons for not participating, place of residence, gender and numbers of family members, and whether any family members had a disability.

Since all respondents did not answer every question, the number of respondents do not total 175 in all cases. Of those who responded to the first question, 105 respondents indicated that they were not participating in community based programs, while 57 respondents were. The residence of 76 respondents was the hamlet of Amenia, while 45 respondents lived in Wassaic. The response to the household membership question showed that there was a range of age groups represented, although 46 of the households included a female over the age of 65. Of those who answered the question regarding disability, 131 households did not include a disabled member, but 30 households did have a disabled member.

4) **OTHER SUGGESTION OR COMMENTS**

There were 71 write-in comments submitted. Common themes were the need for a community pool, with 16 respondents mentioning a pool, and 3 respondents mentioning an indoor pool specifically. A town park was desired by 5 respondents to include a variety of amenities including pools, trails, picnic areas. The need for a generalized community center or "YMCA" type center were mentioned by 5 respondents, while 2 respondents specified a Senior Center. There were 6 comments regarding the need for access for the disabled to facilities and programs, and 4 respondents called for some type of information system to let residents know about recreational facilities and up-coming programs. There were a wide variety of other suggestions written in with 16 comments on the need to include non-sport related recreational activities in the Recreational Programs that the Town sponsors. These included activities for Senior Citizen, Children and Teens, cultural and art programs,



skating rinks, nature walks, and opportunities for self-directed outdoor activities such as canoeing and cross-country skiing. Many respondents stressed the need to have a variety of programs and activities to meet the needs of all the family members.

## FUTURE PLANNING

It is evident from the town-wide survey that citizens of all ages, backgrounds and abilities are not being considered in the current recreation system. Firstly, the Town of Amenia's recreation and open spaces are few in quantity and lacking in variety. Other factors such as lack of public information apparatus, lack of public transportation, insufficient recreational choices, insufficient funding and staffing of a recreation department, and lack of available land for both passive and organized recreation activities either directly or indirectly hamper a properly functioning parks, recreation and open space system. The reasons for all of the conditions stated above are many, but the primary reason can be attributed to the absence of a clear vision of a recreation and open space system. The recommendations presented in this Recreation Plan 2006 (RPM) will create the necessary vision and action plan necessary to develop a coordinated recreation system.

One of the most challenging tasks that the town currently faces in addressing the quantity issue is land acquisition. Crucial to the creation of a Town Center is the land on which to build it. Several parcels have been discussed as a potential site, however, funding has always come up short. The town needs to more vigorously pursue grant money specifically earmarked for this purpose. The immediate creation of a special fund for this purpose could also create leverage for additional funding sources.

The RMP will also address the issue of variety. The current park system in Amenia is almost exclusively focused on youth sports, i.e., baseball and soccer. The senior and middle age groups need more recreational opportunities. Medical advances in recent years have extended the average lifespan and have made the public aware of the importance of physical activity, social connectedness and stress reduction towards maintaining good health. A recreation and park system should serve all age groups, and the various components of that system should be conveniently located to serve those groups most efficiently. For instance, the placement of a senior center in the north part of Amenia would not be the wisest investment of public dollars given that their highest concentration is in the southern end of town.

In response to this increased demand for recreation, Amenia's task is twofold – 1; Bring the delivery of recreation services to modern standards, and 2; Plan for a potentially large population surge in the next 5 to 10 years and beyond. The Action Plan in the following section lays out specific actions that are recommended for the future.



## ACTION PLAN

If the vision of a Town-wide Parks and Recreation System is to be realized, the Town must undertake a series of actions to bring about the desired goals. The following Action Plan lays out the specific actions that are recommended for each goal identified by the Town in the planning process. The Action Plan specifies the responsible party most likely to initiate the course of action: the Town Board (TB), the Recreation Commission (RC) and the Recreation Department (RD) or the Conservation Advisory Committee (CAC). The table is completed with an estimated time frame for each action and a potential funding source. The time frames are abbreviated as below:

- S: Short term – next 12 months (to mid 2007)
- M: Mid-term - next 24 months (to mid 2008)
- L: Long term – next 5 years (to mid 2011)
- O: On going – action that happens on a continuous basis.

Potential funding sources are wide ranging and include local, regional, state and federal funds. The following abbreviations are used in the tables.

ACC	Amenia Chamber of Commerce
CDBG	Community Development Block Grant
CW/CA	Clean Water/Clean Air Bond Act
GOSC	Governor's Office for Small Cities
HVRT	Harlem Valley Rail Trail
HRVG	Hudson River Valley Greenway
NPS - LWCF	National Park Service – Land & Water Conservation Fund
NYSCA	National Council on the Arts
NYS DA	NYS Dept. of Aging
NYS DEC	NYS Dept. of Environmental Conservation
NYSDOT TEP	NYS DOT Transportation Enhancement Program
NYS DOT TIP	NYS DOT Transportation Improvement Program
NYSOPRHP	NYS Office of Parks, Recreation & Historic Preservation
SH	Scenic Hudson
SHPO	State Historic Preservation Office (Dept of OPRHP)
SBF	Scenic Byways Foundation
USDOI-RICA	US Dept. Of the Interior, Rivers, Trails, & Conservation Assistance.

**GOAL 1: Maintain, improve and enhance existing recreational parks and facilities.**

ACTIONS	TIME FRAME	RESPONSIBLE PARTY	POTENTIAL FUNDING SOURCE
1) Improve facilities and access at Beekman Park	O	TB, RC	OPRHP
2) Develop Wassaic Park	O	TB, RC	OPRHP,
3) Improve Tennis Court area at Amenia Elementary School	O	TB, RC	Local

**GOAL 2: Provide a variety of Programs and Services in the Parks and Recreation System.**

ACTIONS	TIME FRAME	RESPONSIBLE PARTY	POTENTIAL FUNDING SOURCE
1) Develop a Town-wide recreational program to include all age groups.	S	RC, RD	Local, NYSCA (for cultural component)
2) Develop recreational programs and services for children	S	RC, RD	Local
3) Develop recreational programs and services for Teens	S	RC, RD	Local
4) Develop recreational programs and services for Families	S	RC, RD	Local
5) Develop recreational programs and services for Senior Citizens.	O	RC, RD	Local

**GOAL 3: Improve and enhance public access to all recreational lands and facilities.**

ACTIONS	TIME FRAME	RESPONSIBLE PARTY	POTENTIAL FUNDING SOURCE
1) Link Park and Recreational System to the Harlem Valley Rail Trail	M	TB, RC	DOT TEP, HVRT, NYSOPRHP, SBF
2) Link MTA stop with Borden Park and DEC Multi-Use Park	S - M	TB, RC	DOT TEP, HVRT, NYSOPRHP, SBF
3) Improve public access to specific parks and facilities including Town, local and state parks and facilities	O	TB, RC	DOT TEP, NYSOPRHP, SBF
4) Promote recreational facilities on a regional and state level to increase usage by out-of town visitors and recreationalists	S	RC	ACC, SBF
5) Provide informational materials in the way of newsletters, brochures, posters, Town website notices and other means of informing residents of recreational programs and events.	O	RC	ACC
6) Ensure access of the disabled to recreational facilities and opportunities through a systematic program of proving transportation, access ramps, elevators, public restrooms for the disabled and other means.	O	TB, RC	CDBG
7) Post directional signs at strategic locations	S - M	TB, RC	SBF, NYSDOT TEP

**GOAL 4: Promote the acquisition and availability of passive recreational areas to conserve open space and provide alternative venues for passive recreational activities.**

ACTIONS	TIME FRAME	RESPONSIBLE PARTY	POTENTIAL FUNDING SOURCE
1) Prepare an inventory of vacant and/or scenic lands	S - M	TB	NYS DEC. NYSCA,SH, HRVG, NYSOPRHP
2) Acquire properties for use as passive recreational area	O	TB	NYSOPRHP, HRVG, NYSOPRHP
3) Connect new parkland with existing recreational facilities with a system of trails	S - L, O	TB, RC, CAC	NYSOPRHP, HRVG, NYSDOT TEP

**GOAL 5: Provide efficient administration of the Parks and Recreation System.**

ACTIONS	TIME FRAME	RESPONSIBLE PARTY	POTENTIAL FUNDING SOURCE
1) Identify stakeholders and levels of service	S	TB, RC	Local
2) Identify responsibilities and requirements of stakeholders	S	Stakeholders	Local
3) Establish decision making process on issues relating to recreation events, programming and allocation of funds.	S	RC	Local
4) Prepare Recreation Manual to include procedures and forms	S	RC	Local
5) Initiate new administrative process	O	TB, RC	Local

**GOAL 6: Provide new recreational parks and facilities to accommodate all age groups and identify and secure funding for acquisition of new recreational lands, and improvement of current and future parkland and facilities.**

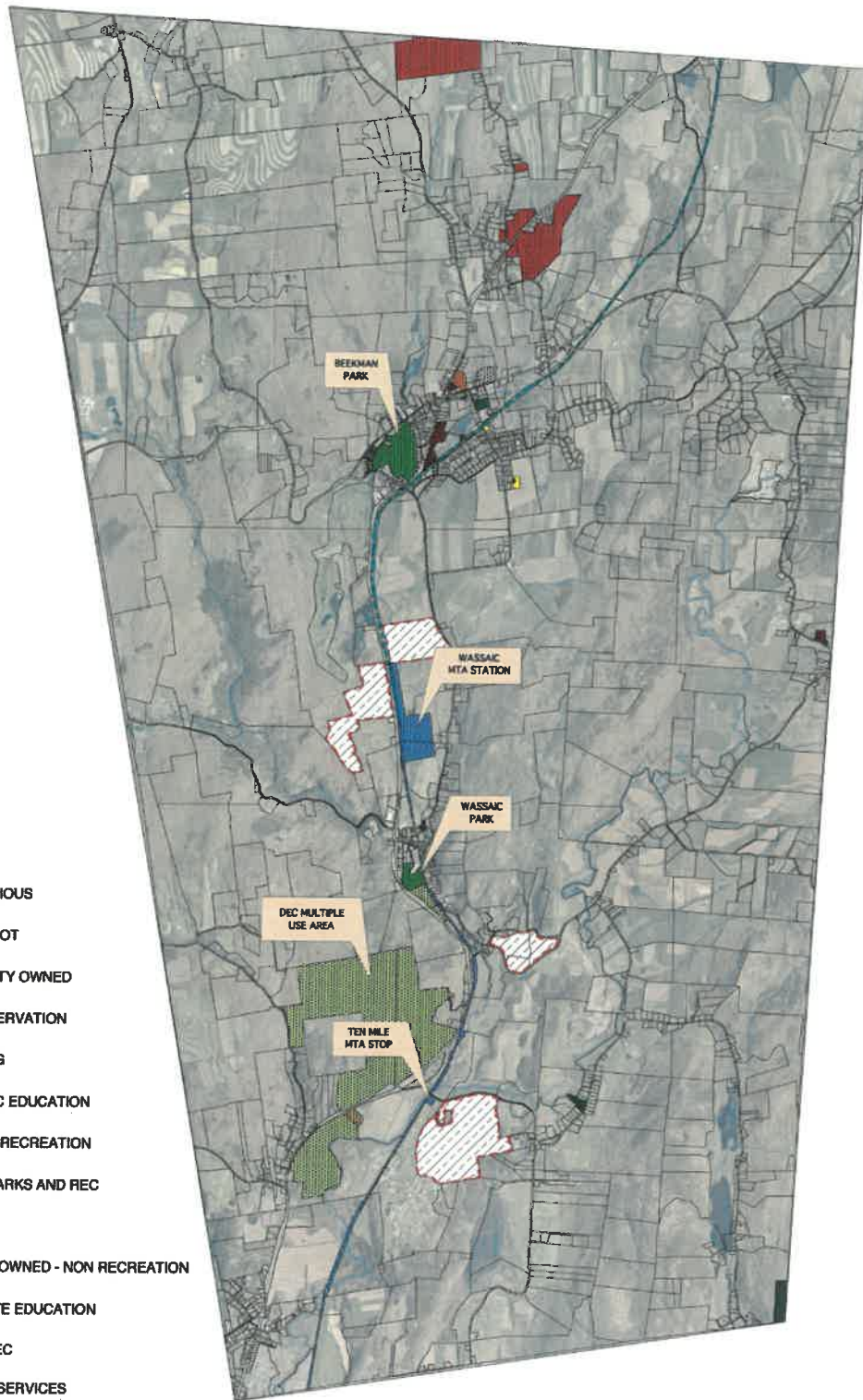
ACTIONS	TIME FRAME	RESPONSIBLE PARTY	POTENTIAL FUNDING SOURCE
1) Provide a general community recreational facility.	M - L	TB, RC	Local
2) Provide an indoor pool to be used by all age groups.	M - L	TB, RC	Local
3) Create Town Parks which may include a variety of amenities including outdoor pools, lakes, picnic areas, nature trails and other recreational amenities.	M - L	TB, RC	NYSOA, NYSOPRHP
4) Search for, and prepare and inventory of lands and buildings as potential sites for recreational redevelopment.	S -M	TB, RC	NYSOPRHP
5) Create recreational centers and facilities to suit the needs of specific age groups such as Senior Citizens Centers, Summer Youth Camps, or Teen Center.	M - L	TB, RC	Local, CDBG for Senior Citizens Center
6) Provide outdoor passive recreational areas for self-directed activities such as hiking, canoeing, fishing and cross-country skiing.	M - L	TB, RC	NYSOPRHP, private donations
7) Continually search for funding sources to match specific recreational projects	O	TB, RC	Local

**GOAL 7: Work with other levels of government and government agencies to improve access to recreational lands and open space, and improve amenities when possible.**

ACTIONS	TIME FRAME	RESPONSIBLE PARTY	POTENTIAL FUNDING SOURCE
1) Work with DEC to improve Access and facilities in the DEC Multi-Use Area	M	RC	NYS DEC, local
2) Work with NYS to redevelop the former Taconic (Wassaic) Development Center as a recreational facility	M - L	TB	Taconic DDSO, NYSOPRHP
3) Work with NYS to link a vacant parcel of state owned land to Wassaic Park as part of the Recreation and Park System	S -M	TB	NYSOPRHP

# LEGEND

-  RELIGIOUS
-  NYS DOT
-  COUNTY OWNED
-  CONSERVATION
-  MINING
-  PUBLIC EDUCATION
-  TOWN RECREATION
-  NYS PARKS AND REC
-  MTA
-  TOWN OWNED - NON RECREATION
-  PRIVATE EDUCATION
-  NYS DEC
-  TOWN SERVICES
-  CEMETERY
-  POTENTIAL PARKLAND
-  HARLEM VALLEY RAIL TRAIL



GUNTLOW & ASSOCIATES, INC.  
ENGINEERS • SURVEYORS • ARCHITECTS

55 NORTH STREET  
WILLIAMSTOWN, MA 01267  
413-458-2198  
413-458-2712 FAX

## RECREATION PLAN 2006

TOWN OF AMENIA, NY DUTCHESS COUNTY

## TOWN RECREATION PLAN

BASE MAP INFO PROVIDED BY  
DUTCHESS COUNTY REAL PROPERTY





# AMENIA RECREATION SURVEY

—  
(Introduction Area w/ Logo)

---

## 1. FACILITIES & EVENTS

Which of the following recreation facilities and events have you used or participated in in the past year?

### Facilities

\_\_\_ Beekman Park

\_\_\_ Silo Ridge Golf Course

\_\_\_ Wassaic Park

\_\_\_ Harlem Valley Rail Trail

\_\_\_ Amenia Elementary School  
Basketball Courts

\_\_\_ Amenia Fish and Game

\_\_\_ Elementary School Grounds

\_\_\_ Wassaic Multiple Use Area

\_\_\_ Webetuck Tennis Courts

\_\_\_ Amenia Library

### Events

\_\_\_ Holiday of Lights

\_\_\_ Schoolhouse Picnic

\_\_\_ Fountain Square Memorial Day

\_\_\_ Sweethearts Dance

\_\_\_ Easter Egg Hunt

\_\_\_ Youth Golf Clinic at Silo Ridge

\_\_\_ Amenia Carnival

\_\_\_ Senior Town Picnic

\_\_\_ Secret Garden Tour

\_\_\_ Open Gym Night at Catholic Church

## 2. WISHES AND DESIRES

Would you be willing to participate in any of the following programs:

### Intergenerational

\_\_\_ Open Walking/Jogging

\_\_\_ Parent/Child Activities

\_\_\_ Open Swimming

\_\_\_ Jazzercise

\_\_\_ Open Chess

\_\_\_ Create a Computer

\_\_\_ Card Playing

\_\_\_ Red Cross Babysitter Training

\_\_\_ Fitness Program

\_\_\_ Red Cross First Aid Class

\_\_\_ Horseback Riding

\_\_\_ Community Gardens

\_\_\_ Ice Skating

Other: \_\_\_\_\_

---

### Adult

\_\_\_ Basketball League

\_\_\_ Coed Volleyball

\_\_\_ Baseball League

\_\_\_ Pre & Post Natal Care

\_\_\_ Open Basketball

\_\_\_ Pre & Post Natal Exercise

\_\_\_ Ski Club

\_\_\_ Fitness Center/Program

\_\_\_ Yoga/Pilates

\_\_\_ Creative Memories Scrapbook

\_\_\_ Beginner Golf

\_\_\_ Water Aerobics

\_\_\_ Dodgeball League

\_\_\_ Open Volleyball

\_\_\_ Open Basketball League

\_\_\_ Floor Hockey League

Other: \_\_\_\_\_

---

### Youth

- |   |   |
|---|---|
| <input type="checkbox"/> Tumbling/Gymnastics      | <input type="checkbox"/> Instructional Floor Hockey |
| <input type="checkbox"/> Summer Day Camp          | <input type="checkbox"/> Afterschool Program        |
| <input type="checkbox"/> Dance Camp               | <input type="checkbox"/> Winter Break Camp          |
| <input type="checkbox"/> Instructional Baseball   | <input type="checkbox"/> Instructional Soccer       |
| <input type="checkbox"/> Instructional Basketball | <input type="checkbox"/> Swim Lessons               |
| <input type="checkbox"/> Skateboard Park          | <input type="checkbox"/> Instructional Lacrosse     |
| <input type="checkbox"/> Teen Center              | <input type="checkbox"/> Spring Break Camp          |
| <input type="checkbox"/> Kinder Gym               | <input type="checkbox"/> Kinder Creations           |
| <input type="checkbox"/> Flag Football            | <input type="checkbox"/> Open Swimming              |
| <input type="checkbox"/> Instructional Baseball   | <input type="checkbox"/> Open Mike Nights           |
| <input type="checkbox"/> Drama Classes            | <input type="checkbox"/> Book Reading Groups        |
| <input type="checkbox"/> Nature Awareness         | <input type="checkbox"/> Tennis                     |
| <input type="checkbox"/> Chess                    | Other: _____  |
- 

### **3. GENERAL INFORMATION**

Are you or any members of your household participating in any community based programs?

☐ Yes ☐ No

If yes, please list: \_\_\_\_\_

\_\_\_\_\_

If no, please describe why you have not participated: \_\_\_\_\_

\_\_\_\_\_

---

---

---

---

## Comments

1. Need a Senior Center  
Need a year round pool
2. Need a year round Senior Center that is open every day  
Need a swimming facility  
Need senior activities
3. Need an indoor pool with red- cross lessons  
Need a camp with structured activities and with enclosed areas so that kids are not out in the hot sun all day
4. Suggestion to mail a list of events to newcomers  
Commented on lack of maintenance of the Wassaic Park and poor parking
5. Would use the rail trail more if porta potties were accessible  
Need wheelchair access
6. Would love a community center with filtered lake or pool (mabbettsville)  
Baseball and soccer all in one location  
Townpeople oriented
7. All day summer camp for kids up to 14 and or summer job opportunities for teens
8. Senior trips – sightseeing (not just gambling)
9. Town center with exercise facilities
10. Amenia needs a Town Park. We need a place for swimming and recreation for families, and a place for teens to work for the summer, etc.
11. Good luck
12. We need trash and recycle bins in the hamlet and then to add in  
a an ecology/ recycle program for youths to
  - a. pick up and sort
  - b. need some to pick up center trough? (Landscaping)
  - c. should be water and a fountain in the center for dogs
  - d. get involved in cemetery project at Taconic DDSD (Wassaic Campus)
13. I hope that facilities for our children will be a priority for recreation plan, do educational offerings qualify for recreation?
14. I encourage the recreation commission to pursue, in cooperation with intermunicipal recreation commission, the building of an indoor swimming pool at the Webetuck

School Campus. There are numerous benefits for many age groups on a year round basis. Grant funding for an intermunicipal project is more readily available than for a very limited season (Town swimming pool, which can also include disproportionately high maintenance costs.

15. The beautiful green barns in Wassaic seem like they would make a great community center with dance classes, community theater art shows, etc.
16. Be sure that there are recreational plans and facilities for people with disabilities. publish a brochure listing recreational possibilities and their locations. Put some online. Most important, find dollars to erect communication tower at the Amenia fire house so that work can get out by cell phone of any accidents. Active recreation carries risks and responsibilities, like everything else.
17. We are concerned that there will be nowhere that we can ride our horses. Horses and youth are a great combination. A child that gets involved with horses doesn't rob or use drugs.
18. Primary community need seems to be more recreational programs and facilities for children and teenagers. Money and planning should make those needs the priority. A community park with swimming like the one on route 44 in Mabbettsville would be good for all the town's residents. For adults I think there are enough existing activities, programs, groups and special events to meet different need and interests available in the area. The senior citizen groups might need more money and help with recreation, in a nice location.
19. Some of the wishes will have to have a stipend cost. Please keep it low.
20. We believe that a major "Y" type facility should be built for the citizens of Dover/ Amenia/Millerton and possibly Millbrook and should be built in Amenia. Indoor Pools – outdoor pools – all need facilities for all groups with transportation to it. A multi-use bond issue should be created for this: sewer and open space.
21. Amenia town pool – portion of Lake Amenia back.
22. Pete Clair and John Ryan should contact Catherine Zappalla (cell 845-877-9450) who owns the N. Eng. Village Center. She had the apartments next to her emptied out so that there would be open rooms for her to have youth activities such as a chess club. She is very interested in providing the open space that she has in her building for youth activities in addition to chess (like other games such as scrabble) activities that there would be an interest for.
23. Please make something of this town. It lacks so much compared to other towns.
24. Taxis

25. I am a wheelchair bound person.
26. Town block parties
27. Would like to see full handicap accessibility in community activities
28. Would like to see: Senior housing; affordable housing for young couples and families; safe walking; more options for shopping for food and clothes, etc; entertainment for young people/adults – movie, indoor pool; miniature golf, park/picnic areas; satellite for DCCC for those who would like to continue there education but not have to travel
29. Any recreational facility should prioritize the needs/desires of area youth in Millerton/Sharon/Etc. – as well as Amenia. Any design should incorporate adequate open space and aesthetic consideration and parking that includes trees and shade – not just black top.
30. Make the basketball/tennis court safer with new fence, short shrubs and ice it down for winter skating with sides for the water.
31. Glad you are doing this – we would be especially interested in activities for little kids (under 5). However, we'd ask that you keep in mind that in most household, both parents worked during the week so a few weekend activities or options would be good.
32. Maybe you have considered, but arts (drawing, painting), (ceramics), crafts (all ages) nature walks, bird watching. There are many people in town who teach. One week or less, session. Fishing for kids see developing a hobby or life interest a working goal.
33. Good luck. We need something more.
34. A swimming pool for Amenia
35. Swimming pool
36. I would love to have a place to swim in Amenia
37. Community pool, updated rec. park in Wassaic
38. Save my tax dollars
39. I would like to multi-generational facility. Involve all age levels at one facility. The mix of age groups provides a "richness" of the town fabric. A town is judged by how it treats the elderly and the young.

40. Really need a community pool for children and adults
41. Would like to see the possibility of acquiring the property adjacent to the Wassaic ball field from NYS – this property was given to NYS metro North. Also could the corp. of eng. is used for assistance? Would like to see Wassaic Park developed into a community picnic area with walking trails along the brook, a fishing area, walking trails, picnic tables, etc.
42. Please don't get discouraged and keep up the good work.
43. How about an adult cooking course that focuses on healthy and simple recipes to improve our eating habits? Art programs can be a great outlet for expression for all ages with very little chance of injuries. How about a program for novice gardeners – perhaps even a community garden
44. The hidden gardens tours raise money to improve the main street. They could learn much from Millerton. Real trees are planted on the main street, the shabby wine barrels need to be replaced. Real evergreens need to be planted. The present committee needs new input. They do not enhance the town. The town board nit-picks the “expenses” for the recreation commissions plans, needs and requests. Amenia has long ignored recreation. Wish you all the success with your Master plan.
45. Recreation isn't just physical. How about some cultural events. A film festival, concerts, talks by interesting residents, guides nature walks. I'd like to see a community center with indoor/outdoor athletic facilities (gym, pool, weight room) meeting rooms and large space for cultural events, meeting of community groups, etc. It might be helpful to circulate an annual brochure listing recreation facilities, programs. Also a wish list/ needs to attract new volunteers/ expand programs, thanks for survey
46. It would be wonderful to have a local summer camp with sports. Crafts and swimming – similar to the Town of Washington program/
47. Organize bus trips to foxwoods, etc. Cooking or gardening classes
48. Our involvement in baseball and soccer has been a very rewarding experience a real sense of community is felt in time spent at the ball park. We would love to see more programs running through the summer months, (not to be used as “babysitting”, but rather enrichment)
49. We need to have a town pool/lake with bigger playground – we should not have to send our kids to Millerton for the summer camp
50. You should develop hiking trails, fishing opportunities, canoeing, cross-country skiing and other multi generational, self-directed activities. Not everyone wants



to join something

51. We need the town board to wake up and approve the re-doing of the silo ridge which will help the Town of Amenia to expand and give employment to many young people and keep these young people interested in living in the area. Employment is needed in this area instead of one-person shops.
52. Make plan for a town-swimming park financed by capital improvement bonding – 20, 30 years – with taxation to town residents.
53. I suspect you need to work on putting out the word, not on special events like picnics and dances, but for ongoing programs.
54. It would be nice to have more things in this town for kids to do. In the winter it would be nice to have a skating rink (Amenia).
55. (I) Urge the town to expand the playing fields, improve, and most important, add a pool.
56. We are totally unaware of any community-based programs nor did we know that we had facilities available to us. Would you send us a packet or more info about what is available to us. We know more about the Millbrook community than Wassaic...perhaps you need better advertising! I have five kids, all under age ten, so am most interested in knowing about facilities and events. Thanks!
57. It might help to have a town meeting, like what was done for the (Town) master plan, to help people figure out the possibilities and their priorities.
58. Mailing of events to households and better notification regarding Senior Picnic.
59. Amenia needs a swimming pool!! A playground at Beekman fields with a base that is not all disintegrated wood chips.
60. The seniors need a year round pool and a place to meet for cards and scrabble games. A pool table would be nice also.
61. We have recently moved here. As I get to know the area, I've noted everywhere around us has a summer freshwater pond or lake in their community. For ex.- Mudge Pond, Rudd Pond State Park, Stissing Lake, in Pine Plains, etc. A nice park with a freshwater pond would be a wonderful quality of life asset to our community.
63. This family actively involved with home life. Involved with outdoor activities and current members of two gun clubs in different townships other than Amenia. Would be receptive to trying new activities and adventures within this town if it would stop fighting! Thank You Kindly – with interest fellow Amenia residents.

64. Please replace the wooden play gym/climbing castle in Wassaic Park. Current one is unsafe – i.e. splinters and holes. Additional toddler playthings and/or climbing toys, etc would be great.

65. With some additional efforts and inputs, the positive idea of a local transportation system/arrangement, with the introduction of new activities and/or programs that are being made available, would benefit members of the area to be more receptive and able to participate in different things.

66. My child has learning disabilities has a hard time with a basketball among other sports, etc. Struggles with understanding concepts. Must be shown how to do things instead of being told. Must be shown how to do concepts of math on paper in ways for him to understand. Has trouble walking and has low motor skills, but we are working with him on this every day. Struggles with music – playing guitar but tries hard to play and understand music notes. Plays drum great. This town we live in needs to build a park for these kids to play in, and be supervised and be safe. There need to be a park pool for the adults to go with their kids to swim. It would be nice if there were concerts held at these parks during the summer months. Whether it be school related or people who do recitals from other areas. Car show would be great to have in Wassaic or Amenia for the local kids. It would give them the opportunity to explore. Wassaic need to offer days of appreciation to kids who have abilities to make their future better and more efficient. New ideas – etc. to make a better world for them to live in.

67. We live in the hamlet of Amenia – four of us. Two girls 3 and 5 and two grandparents 53 and 54. I would like to see more cooperation with Webutuck. Some kind of use of the so called “tennis court”. Putting up a net would be nice. New black top this year was a good start. Some kind of arts and crafts in gym. Using the rail trail for a bike hike a couple of times would be good. Helping Marion at the Library for older kids could give them experience and a feeling of being useful. Sending Amenia Fire Company for help with the court of firework would impact on a large group. I tried to get a concert a few years ago and failed that would be worth looking into. Keeping the playground at the ball field clean is needed. The Easter egg hunt and game last Easter was excellent.

68. I think the facilities at Webutuck should be used more. For instance, few communities have tennis courts like ours and the use of the playing fields should be encouraged. We wish you well and appreciate the time and effort you are giving Amenia-

69. We need other community programs for our kids involving a lot of activities – not just for athletic children.

70. Senior citizens should not be paying \$20,000 on day care you all are calling summer recreation program. It is daycare to parents. Seniors have enough to pay on medical, food, rent, taxes of 24% without caring for children no matter what you call it.

71. This is an extensive list. How are you going to assign totals as there is no number assigned to the questionnaire/survey to act as some method of "control" in the matter of total distribution. Also, they should all have been returned to the Town Hall – This is taxpayer money.

#### IF NO, WHY

1. Programs not available (baseball, and basketball leagues).
2. Do not know what the community based programs are.
3. Not familiar.
4. Do not really know what is available or how to get involved.
5. Unaware of available programs. Little time. We use rail trail a lot.
- 6 Too old for the rest of it.
7. Nothing has been of interest.
8. Time constraints.
9. Not aware of any programs at the moment that I would be interested in. I loved the yoga classes offered a few years ago.
10. Travel a great deal on the weekends.
11. Moved to Amenia one year ago. Still learning what is available.
12. Time constraints. Work. Nothing interested in.
13. Nothing interests us yet.
14. Pete- Keep up the good work!
15. I have yet to see any list of community (Amenia/Wassaic) programs other than yearly activities.
16. Don't know about them.
17. Have not participated regularly enough.
18. Busy schedule for work. Too much work, not enough playtimes.
19. Have other interests and use Harlem Valley Rail Trail for exercise and easy bike riding.
20. For past thirty-three years had no time- just retired and looking for new avenues to do things.
21. Lack of interest.
22. Unfortunately, no longer robust.
23. We are not full time residents.
24. Not interested.
25. Our interest is in equestrian activities.
26. Not retired yet!
27. My job in the health care profession keeps me very busy. When I arrive home after a busy day I really don't want to go out.
28. Don't know of any. Recreation Department should put out a flier to inform what it has to offer.
29. Working too hard.
30. Nothing of interest.
31. We have very young children who are not yet old enough.
32. Would need transportation to and from events.

33. Not available.
34. Haven't heard of anything interested in.
35. Not sure what the programs are.
36. Too busy.
37. Lack of personal need.
38. Several friends and I would like to meet somewhere and make crafts. We need a place in town.
39. Not enough time. Maintaining a house is very time consuming.
40. Don't know of any offered.
41. Alternatives in Millbrook.
42. Busy Elsewhere.
43. Not of interest.
44. – *Comments that were here in first draft were removed from this final draft since they were inappropriate and not helpful -*
45. Not a communitian.
46. Don't know where there are any programs at all!
47. No Rec Park! No swimming facility! No music bandshell!
48. No children-which counts for a lot of them (programs).
49. Don't know of too many.
50. There is really nothing of "quality programs" offered in Amenia that suits our interest. We have become so accustomed to supporting other towns because they offered interesting, quality programs. Such as ...(Sharon, CT), travel soccer; (Dover/Millbrook?) swim lessons; (Lakeville) Ballet/Tap Dance; summer reading. Not involved since children outgrew soccer.
51. Female member of household disabled.
52. Unsure of programs currently offered.
53. What community based programs does Amenia currently have?
54. Unable to participate with the fitness program R/T?. School gym being worked on (needed repairs).
55. Not currently. We have in the past. There are no current programs of interest.
56. Not well.
57. We only get the Millbrook Round Table and the Poughkeepsie Journal. I'm not aware of what programs are going on. (Son goes to Dutchess Daycare so we don't get fliers if you happen to distribute them at school).
58. No time during day.
59. Health problems at this time.
60. Conflicts with work schedule.
61. Because I have no information.
62. I ride horses in Stanfordville.
63. Work Schedule.
64. Too Busy.
65. Too old to participate.
66. We are not aware of the community-based programs.
67. Age.
68. Did not know about them. Also, what can you do at the Wassaic Multiple-Use area?
69. I travel a lot and I am a camera bug. Former recreation administrator (Retired).

70. Health, work, time constraints.
71. None available for age groups (65+). Rec has in the past been only focused on baseball and soccer, leaving other children (that are) not involved in baseball left out – and adults totally ignored. I hope this committee can change things.
72. We weren't aware of any. (We've lived here for two years) We do have membership at the Millbrook Training Center and we'd rather pay our dues at an Amenia Recreation Center.
73. None have been offered that interest me. Programs are not advertised well.
74. My son used to play youth soccer and baseball, but now plays on his school teams.
75. We are not aware of any community-based programs.
76. Not aware of what's available. Not home all week.
77. We never know about them in time. I would like to receive an agenda of programs through he mail so I can participate. I attend drop in center in Wingdale as they have crafts and line dancing. Wassaic just plays Bingo – not my speed.
78. Raising small children now.
79. Fairly new to area – don't know what's available.
80. Most programs I've not been aware of, or its been heard of after the fact.
81. Our advanced age limits our participation.
82. None of interest.
83. We had (our son) in after school program but it did not work out.

#### GENERAL INFO – IF “YES”, PLEASE DESCRIBE

1. Baseball, soccer, boy scouts
2. Volunteer driver – transportation for Amenia Library
3. Co-ed softball
4. Open gym @ Immaculate Conception – babe ruth baseball
5. Amenia Historical Society
6. Mabbettsville park \$180. To another community because there is no park in Amenia
7. Joined CS1 (chubby bunny)
8. Farm league baseball
9. Library, Lions club, PT1
10. Would love to see lake re-built for swimming and ice skating (this would interest me more than a community pool
11. Would need to develop a community center and/or allow silo ridge to go ahead with their building projects. We need \_\_\_\_ in this community
12. Chamber of commerce
13. Adopt a family
14. Seniors
15. Senior center, Taconic DDSO athletic exercise class and volunteer at the Taconic DDSD and a senior center – town government meetings
16. Seniors
17. Wassaic's tag sale – enjoyed
18. Baseball, soccer
19. Library, carnival, book sales, catholic thrift shop

20. Holiday of lights, book?, Women's club, Democratic Party, church activities
21. Imagine Amenia
22. Kids play baseball and soccer
23. Library sales, rail trail
24. Seniors
25. Seniors
26. Volunteering, SASFC
27. Senior programs
28. OFA – nut
29. Baseball
30. Church supper, clean-up, gardening
31. Music together class in Millerton, NY and playgroup in Dover Plains, NY
32. Senior center OFA, schoolhouse project, rail trail
33. South Amenia senior center
34. South Amenia friendship center
35. The Mabbettsville pool, swim lessons, Millbrook football, Millerton baseball
36. In-house soccer, travel soccer
37. Indian rock schoolhouse, rail trail association
38. Baseball soccer
39. Baseball
40. All volunteer town work
41. Baseball (t-ball) soccer
42. Hidden gardens
43. Scouting program, soccer program
44. Male member of household defensive coordinator of Pine Plains football team, strength training coach at P.P. year round
45. Soccer, basketball camp, baseball, fitness program by Barbara Carlo
46. Travel soccer
47. Library
48. Soccer program and baseball program
49. Seniors group
50. Imagine Amenia
51. CPIC committee – enhancement committee townscape committee – schoolhouse committee historical soc; Amenia women's club, cornell coop. ext. board member and master gardener committee
52. Friendship center, seniors club
53. Fall soccer
54. Soccer, little league, town baseball
55. Volunteer library, ladies aux., Amenia Fire Co.
56. Baseball soccer
57. Senior meetings and activities
58. Historical society
59. Baseball and soccer programs

### Wishes & Desires – intergenerational

1. X-country skiing and snow shoe trails
2. Arts and crafts/music
3. We need a swimming pool in Amenia
4. Any chance of getting a pool or contracting with Maplebrook?
5. Arts, ceramics, educ. Seminars, photography, music, (bandshell?)
6. How about some kind of art program?
7. Discussion groups
8. Martial arts for kids and adults
9. X-country skiing
10. Concerts
11. Senior center, swimming pool exercise – heated
12. Photography club
13. Theater, drama, board games
14. It would be great if there were connections (walking/jogging) between the hamlets and to the train station. Also green (farmers) market; flea market; music concert; nature and historic trails
15. Outdoor lake or pond
16. Infant CPR
17. Youth group participation activities/program for prevention and safety
18. Board games
19. Music lessons, piano, guitar, auto classes for kids

### Wishes 7 Desires – (other)

1. Dance classes (ballet, yoga)
2. Knitting class; arts and crafts (i.e.: wreath making)
3. Town park (for community gardens)
4. Eat

### Adult other:

1. Hiking, coed dodge ball, water rafting
2. Softball, dances (period, swing, rock and roll and square, etc.)
3. Bicycle, chess, swimming pool
4. Advanced golf, ballet
5. Softball
6. Would love to watch scheduled baseball and basketball games
7. Too bad there are no discussion groups and activities for the mind.
8. Jump rope
9. Chi-gung (to compliment yoga/Pilates)
10. Fitness program – without the overhead cost, set income, its difficult to pay
11. Spanish lessons for English speakers and English lessons for Spanish speakers in community
12. No

13. Photography
14. Marching band
15. Soccer
16. Once again, there are no art programs? How about healthier living through our diets.
17. Step aerobics, dance exercise, nature and cultural programs, contra dancing or circle dancing, crafts classes
18. Spin classes
19. Knitting/needle point
20. Summer outdoor concerts
21. Senior golf
22. Summer concerts, pool – this would benefit the entire community (all age groups)
23. Town pool
24. Senior trips
25. Theater drama, board games
26. Knitting, needlepoint
27. Adult group for daily discussions on parenting and the results of public influence
28. Amenia historical society
29. Tennis (incl. lessons) ballroom dancing with lessons
30. Tennis, Dancing

#### Youth (other)

1. Synchronized swimming – water ballet
2. Soccer league for teens
3. Bocce ball, badminton, driving range – golf, horseshoes, ping-pong
4. Movies
5. Beginner golf
6. Playground and ball field could use some TLC
7. Kids are in need of a community facility
8. Separate teen female/male workout with weights instruction – weekly basis – affordable. Pilates for youth a plus. Equestrian program for youths a plus.
9. For my granddaughter (summer camp, swim lessons, open swimming)
10. This sounds supper. My grandchildren would love these programs
11. Art/drawing – photography
12. Instructional gymnastics
13. Beach volleyball
14. Pottery
15. Soccer
16. Golf
17. Orienteering bike club, big play ground
18. Trips for children to concerts; museums, movies in winter (weekends) at fire house or elem. School. Flood tennis courts for ice-skating, teen dances and trips to concerts.
19. Before school program
20. Dance classes
21. Hold after school guitar classes. He knows how to play drums well. Would also be great for children with disabilities who play instruments.



## AMENIA RECREATION SURVEY RESULTS

---

### 1. FACILITIES & EVENTS

Which of the following recreation facilities and events have you used or participated in the past year?

#### Facilities

Harlem Valley Rail Trail	135
Amenia Library	95
Silo Ridge Golf Course	52
Beekman Park	33
Elementary School Grounds	23
Webetuck Tennis Courts	19
Amenia Fish and Game	19
Wassaic Multiple Use Area	14
Wassaic Park	14
Amenia Elementary School Basketball Courts	11

#### Events

Amenia Carnival	88
Holiday of Lights	72
Schoolhouse Picnic	42
Fountain Square Memorial Day	40
Secret Garden Tour	32
Senior Town Picnic	21
Easter Egg Hunt	16
Sweethearts Dance	9
Open Gym Night at Catholic Church	5
Youth Golf Clinic at Silo Ridge	2

### 2. WISHES AND DESIRES

Would you be willing to participate in any of the following programs:

#### Intergenerational

Open Swimming	100
Fitness Program	75
Open Walking/Jogging	75
Ice Skating	68
Horseback Riding	57
Red Cross First Aid Class	39
Community Gardens	37

Parent/Child Activities	34
Card Playing	29
Jazzercize	24
Create a Computer	23
Red Cross Babysitter Training	20
Open Chess	16

Other: \_\_\_\_\_

---



---

#### Adult

Fitness Center/Program	81
Yoga/Pilates	62
Water Aerobics	51
Creative Memories Scrapbook	30
Coed Volleyball	25
Beginner Golf	20
Ski Club	18
Baseball League	16
Open Volleyball	15
Basketball League	14
Open Basketball	12
Open Basketball League	9
Pre & Post Natal Exercise	9
Pre & Post Natal Care	6
Dodgeball League	6
Floor Hockey League	4

Other: \_\_\_\_\_

---



---

#### Youth

Summer Day Camp	41
Swim Lessons	40
Open Swimming	39
Teen Center	63
Nature Awareness	33
Book Reading Groups	28
Skateboard Park	28
Tumbling/Gymnastics	27

Afterschool Program	27
Tennis	25
Drama Classes	24
Instructional Soccer	32
Instructional Basketball	20
Chess	19
Kinder Gym	18
Dance Camp	18
Spring Break Camp	18
Instructional Baseball	14
Kinder Creations	14
Open Mike Nights	13
Winter Break Camp	11
Flag Football	10
Instructional Lacrosse	5
Instructional Floor Hockey	3
Other: _____	

### 3. GENERAL INFORMATION

Are you or any members of your household participating in any community based programs?

No	105
Yes	57

If yes, please list: \_\_\_\_\_

If no, please describe why you have not participated: \_\_\_\_\_

Are you a resident of:

Amenia Hamlet	76
Wassaic	45

South Amenia	13
Smithfield	12
Leedsville	6
Amenia Union	5
Other:	_____

Please list the gender and number of members of your household in the age range in which they fall.

Males

15	1-6	18	13-18	7	25-30	25	32-42	19
	49-54		12	61-65				
18	7-12	4	19-24	7	31-36	20	43-48	24
	55-60		38	65+				

Females

19	1-6	14	13-18	9	25-30	30	32-42	22
	49-54		12	61-65				
16	7-12	4	19-24	6	31-36	15	43-48	31
	55-60		46	65+				

Are there any members of your household with a disability?

30	Yes	131	No
----	-----	-----	----

b

Other suggestions or  
comments: \_\_\_\_\_

---



---



---



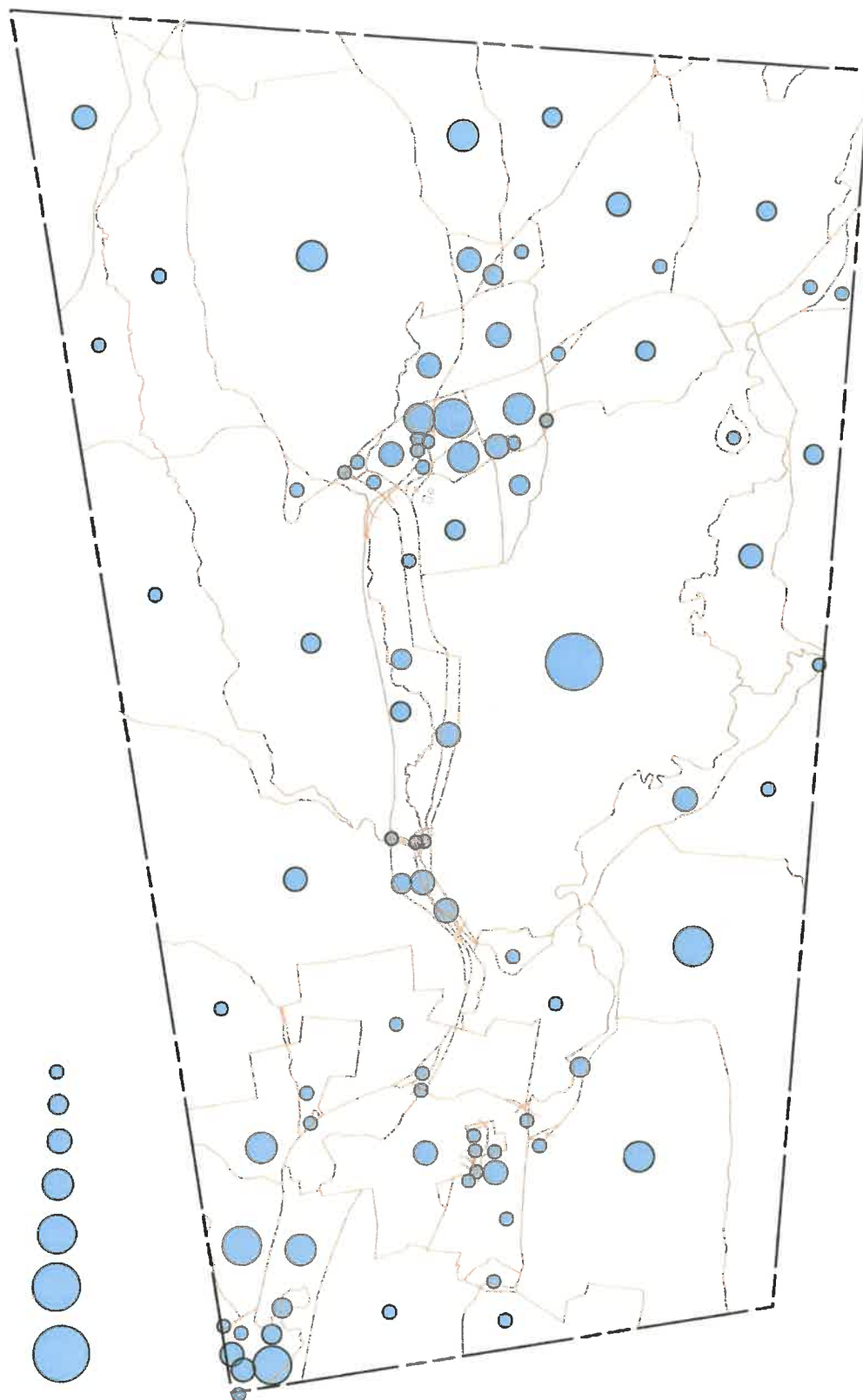
---



---



---



GUNTLOW & ASSOCIATES, INC.  
ENGINEERS • SURVEYORS • ARCHITECTS

55 NORTH STREET  
WILLIAMSTOWN, MA 01267  
413-458-2198  
413-458-2712 FAX

## RECREATION MASTER PLAN

TOWN OF AMENIA, NY

DUTCHESS COUNTY

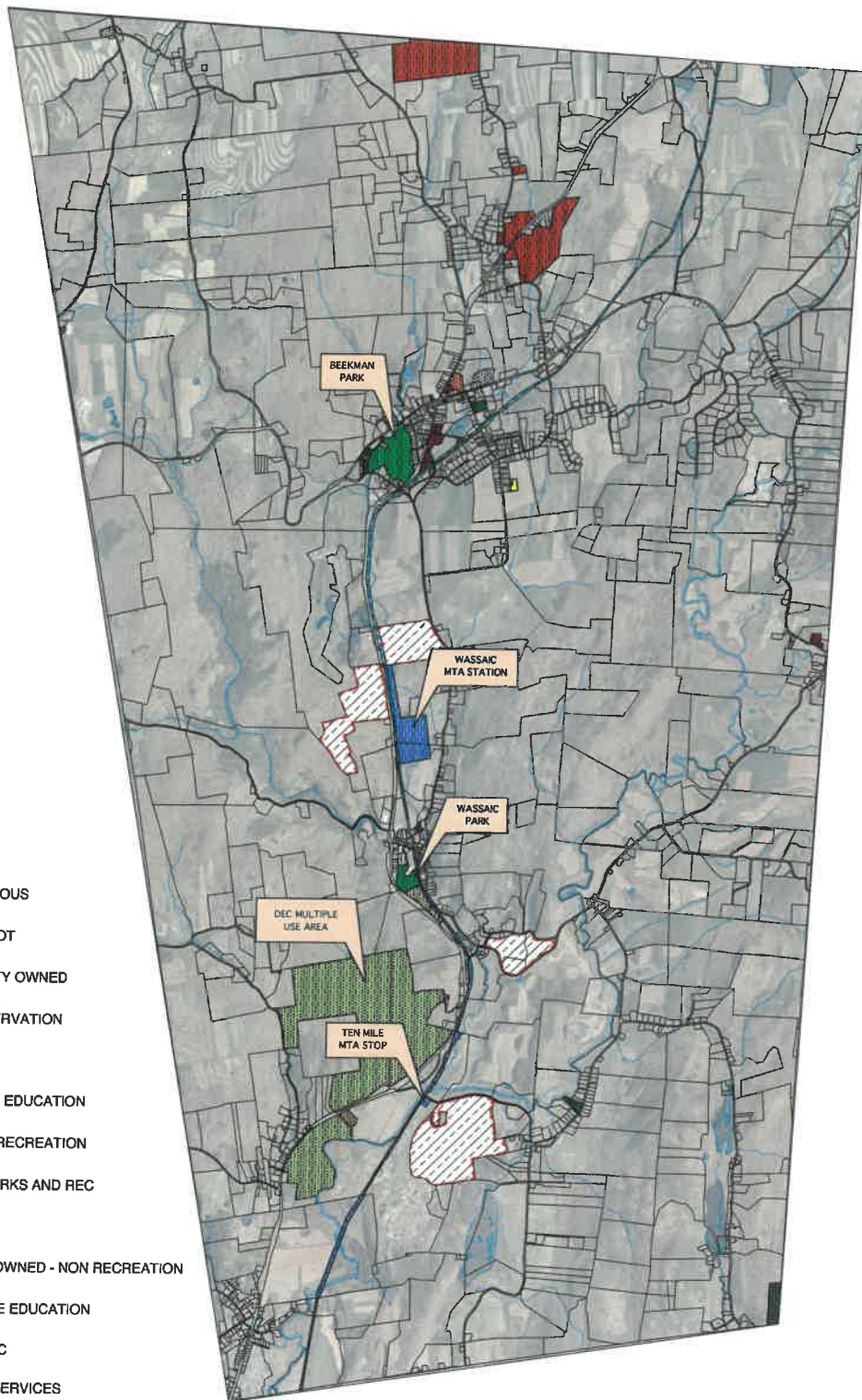
## POPULATION DISTRIBUTION MAP

BASE MAP INFO PROVIDED BY  
DUTCHESS COUNTY REAL PROPERTY



# LEGEND

-  RELIGIOUS
-  NYS DOT
-  COUNTY OWNED
-  CONSERVATION
-  MINING
-  PUBLIC EDUCATION
-  TOWN RECREATION
-  NYS PARKS AND REC
-  MTA
-  TOWN OWNED - NON RECREATION
-  PRIVATE EDUCATION
-  NYS DEC
-  TOWN SERVICES
-  CEMETERY
-  POTENTIAL PARKLAND
-  HARLEM VALLEY RAIL TRAIL



SCALE



GUNTLOW & ASSOCIATES, INC.  
ENGINEERS • SURVEYORS • ARCHITECTS

55 NORTH STREET  
WILLIAMSTOWN, MA 01267  
413-458-2198  
413-458-2712 FAX

## RECREATION PLAN 2006

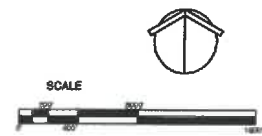
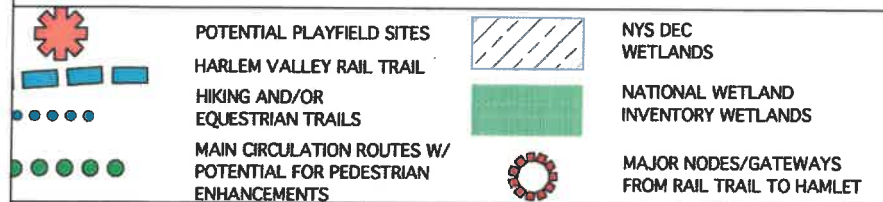
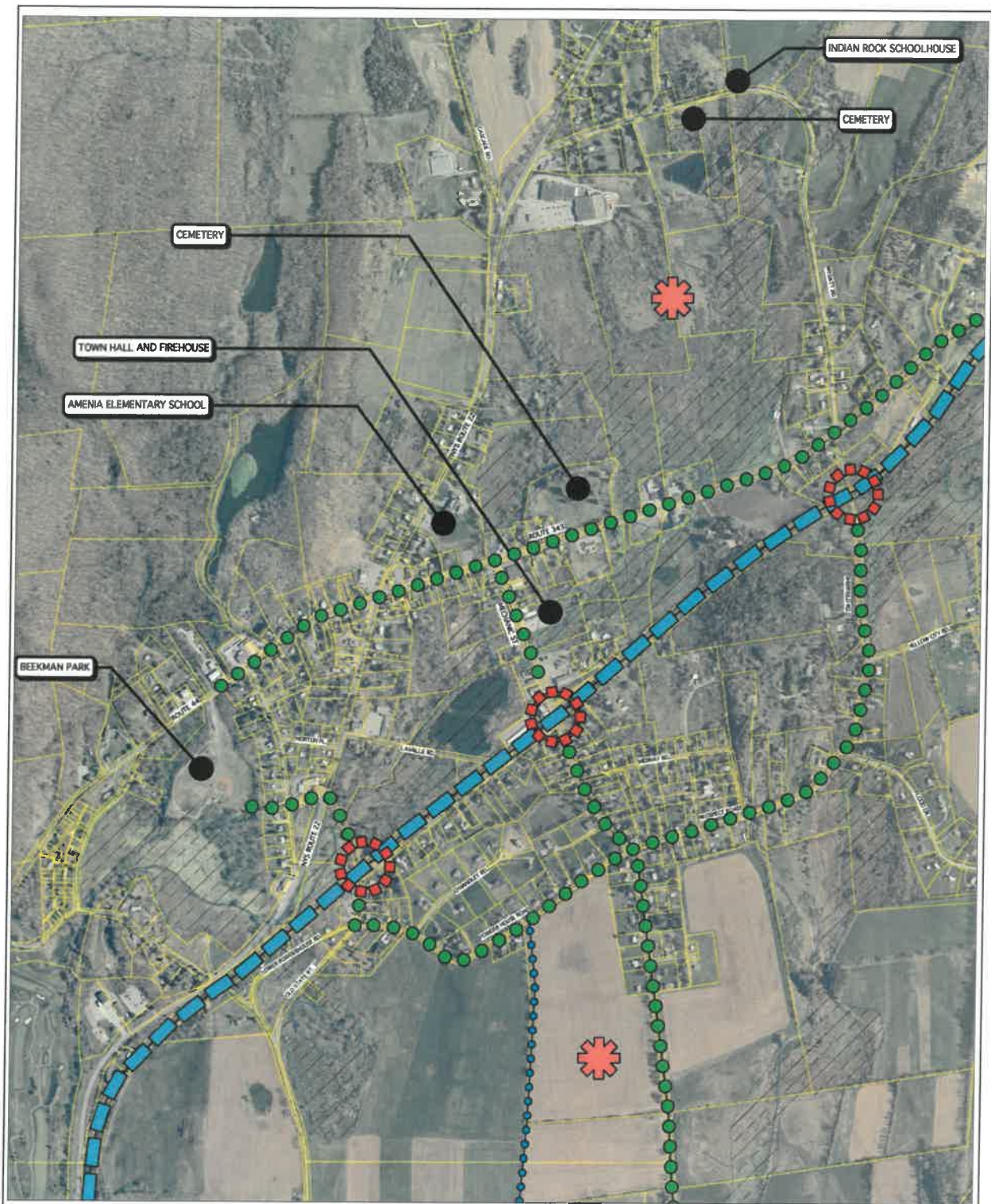
TOWN OF AMENIA, NY DUTCHESS COUNTY

## TOWN RECREATION PLAN

BASE MAP INFO PROVIDED BY  
DUTCHESS COUNTY REAL PROPERTY







GUNTLOW & ASSOCIATES, INC.  
ENGINEERS • SURVEYORS • ARCHITECTS

55 NORTH STREET  
WILLIAMSTOWN, MA 01267  
413-458-2198  
413-458-2712 FAX

## RECREATION PLAN 2006

TOWN OF AMENIA, NY

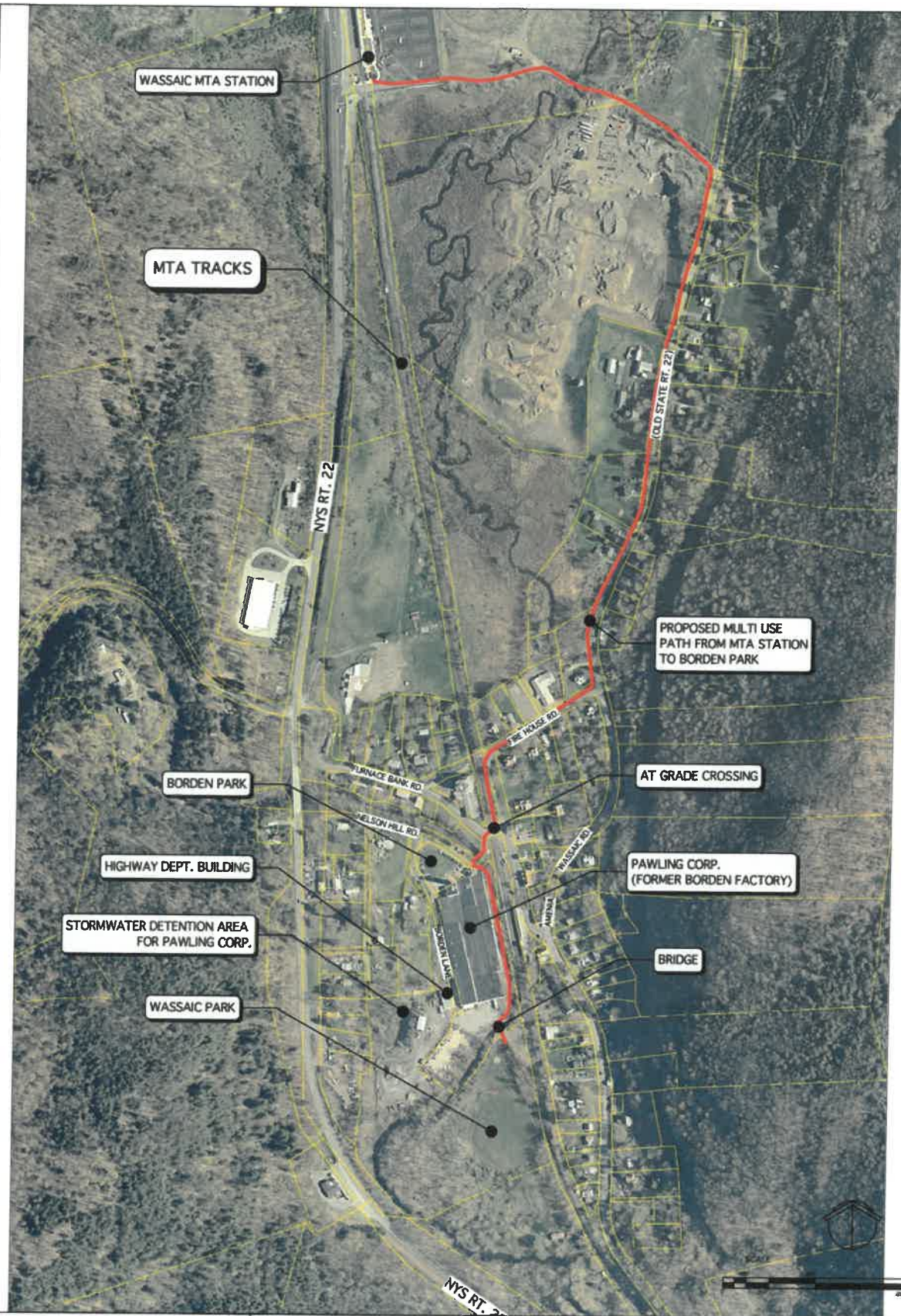
DUTCHESS COUNTY

## AMENIA HAMLET CONCEPT PLAN

BASE MAP INFO PROVIDED BY  
DUTCHESS COUNTY REAL PROPERTY







GUNTLOW & ASSOCIATES, INC.  
ENGINEERS • SURVEYORS • ARCHITECTS

55 NORTH STREET  
WILLIAMSTOWN, MA 01267  
413-458-2198  
413-458-2712 FAX

## RECREATION PLAN 2006

TOWN OF AMENIA, NY DUTCHESS COUNTY

## WASSAIC HAMLET CONCEPT PLAN

BASE MAP INFO PROVIDED BY  
DUTCHESS COUNTY REAL PROPERTY





Passenger Drop-Off /  
Turnaround  
Landscaped Entry/  
Seating Area

New Parking  
Area - 100 Spaces

Stormwater  
Detention Area

New Basketball  
Court

New Play  
Equipment

Add Canopy to  
Concession Building

Gravel Service/  
Access Road

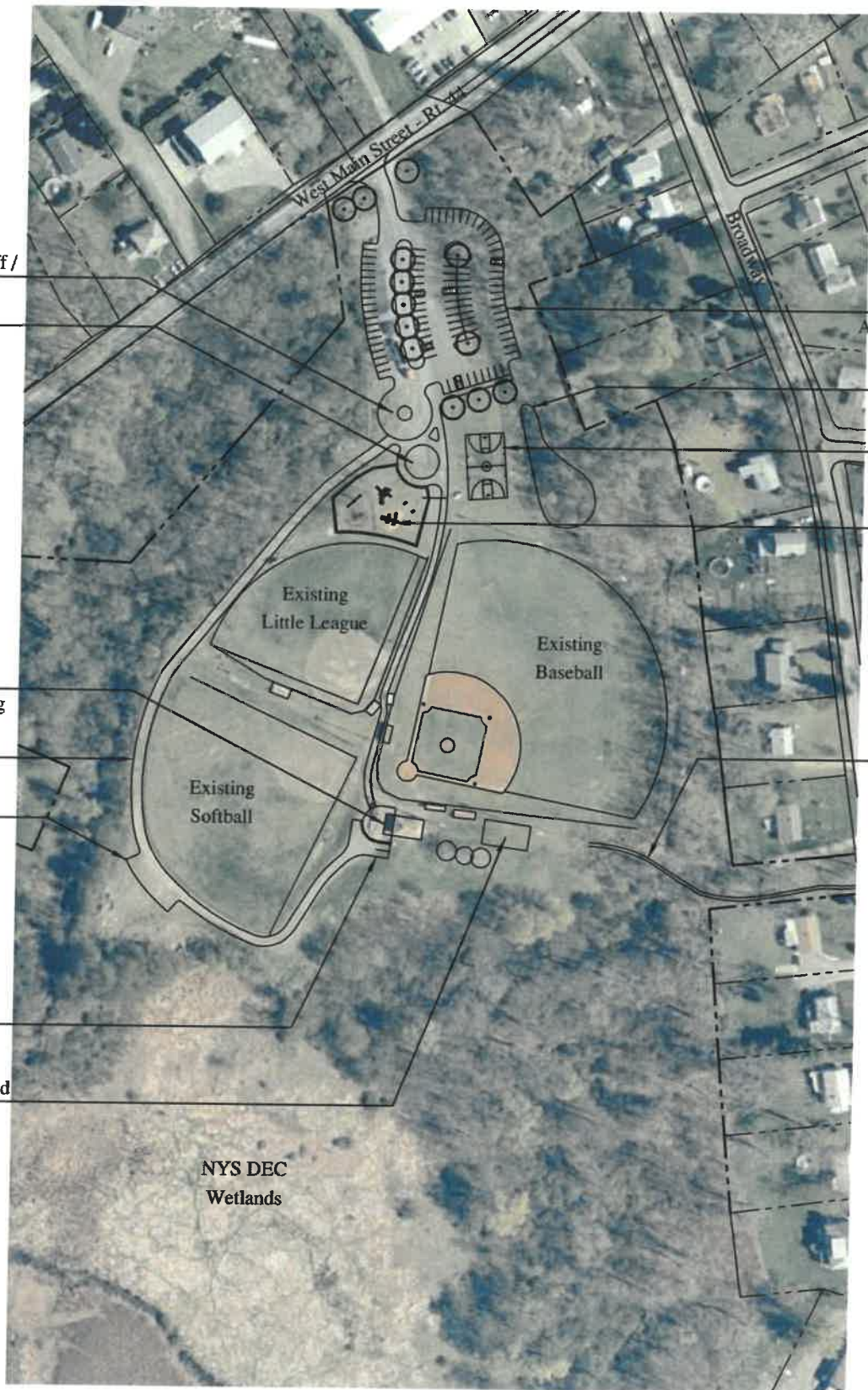
Proposed Picnic  
& Parking Area  
9 Spaces

Bark Chip Path  
To Broadway

Accessible Parking  
2 Spaces

30' x 60' Prefabricated  
Pavillion

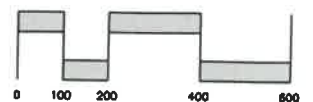
NYS DEC  
Wetlands



## Conceptual Site Plan Beekman Park

Amenia, NY

June 2006





### Level of Service for Athletic Complex at Beekman Park

#### RECREATION FACILITY SUPPLY (RFS)

##### A. Beekman Park – Present Supply

$$EU \times A = RFS$$

Where:

EU = Expected Use (#Visits/Day/Unit)

A=Availability (#Days/Year/Unit)

RFS= Recreation Facility Supply (#Visits Available/Year/Unit)

##### EU Calculation

Baseball:

$$(18 \times 3) \times 120 \text{ days} = 6,480 \text{ Visits per Year}$$

Soccer:

$$(20 \times 3) \times 70 \text{ days} = 4,200 \text{ Visits per Year}$$

$$\text{Total RFS} = 10,680 \text{ Visits Per Year}$$

#### RECREATION FACILITY DEMAND (RFD)

Demand Formula:

$$\frac{\text{Recreation Participation} \times \text{Participation Frequency}}{\text{Sample Size}} = \text{Recreation Facility Demand}$$

Where: RP = Recreation Participation (#Participants/Year/Unit)  
PF = Participation Frequency (#Visits/Year/Unit)  
SS = Sample Size (Total town population)  
RFD = Recreation Facility Demand(#Visits Reqr'd /Person/Year/Unit)

$$\begin{aligned} \text{RFD Formula: } &= 350 \times 12 \times 2 / 4,048 \\ &= 2.1 \text{ Visits Required / Person / Year/ Athl. Cmplx} \end{aligned}$$

#### Minimum Population Service Requirement (MPSR)

MPSR Formula:

$$\frac{\text{Recreation Facility Supply}}{\text{Recreation Facility Demand}} = \text{Minimum Population Service Requirements}$$

Where: RFS = 10,680  
RFD = 2.1

MPSR Formula:

$$= 10,680 / 2.1$$

$$= 5,086 \text{ People Served Per Year Per Athletic Complex}$$

LEVEL OF SERVICE (LOS)    Beekman Park's Ballfields, Parking and Pedestrian  
Areas Total 8.7 Acres

Level of Service Formula:

$$\text{Park Acres / Classification} \div (\text{MPSR} / 1000) \\ = \text{LOS}$$

$$= 8.7 \div (5,086 / 1,000)$$

$$= 1.7 \text{ Acres} / 1,000 \text{ Population Served}$$